

MASS FLOW CONTROLLERS

MASS FLOW METERS

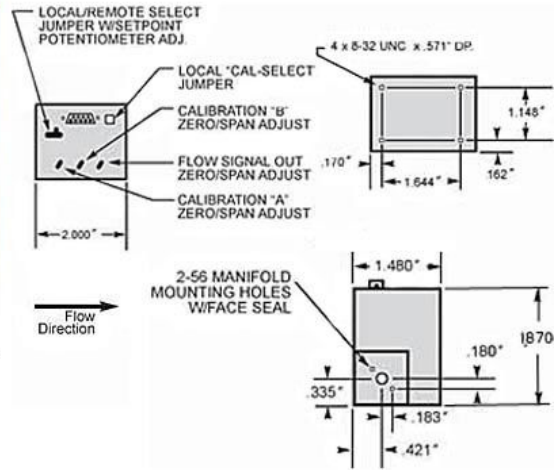
VACUUM & PRESSURE CONTROLLERS

CONFIGURABLE FEATURES

CUSTOM CONTROLLERS

FREE EVALUATION

PRINT as PDF



### Specifications:

#### Performance:

	Analog	Digital
Linearity	± 3.0% of Full Scale (Typical)	± 0.5%
Repeatability & Hysteresis	Range Dependant	± 0.15% FS
Response Time	40 msec	150 msec
(to within 1% of set point)		
Temperature Coefficient	0.09% / °C	0.09% / °C Uncompensated
(Deviation from 21°C Cal Temp)		0.005% / °C Compensated
Long Term Stability	0.2% FS	0.2% FS
(7500 hours)		

#### Fluid Requirements:

Calibration Gas (Non-Corrosive)	Customer Specified	Customer Specified
Flow Ranges	Customer Specified 0, 0-500sccm	Customer Specified 0, 0-750 sccm
Pressure Range		0-100 Psi
Cal Pressure		25 Psi
Internal Leakage		10 <sup>-5</sup> sccm @1, 30 and 100 Psi (He)
External Leakage		2 x 10 <sup>-6</sup> sccm (He)

#### Electrical Requirements:

Input Voltage (single supply)	12, 15, 18, or 24 volts +10% - 3%
Power Consumption	1.5 Watts Maximum
Control Voltage	0-5 VDC, 1-5 VDC, or 4-20mA
Digital Control	RS232, Digital only
Output Voltage	Customer Specified

#### Environmental Requirements:

Operating Ambient Temp.	0-50°C
Storage Temperature	-40 - 70°C
Humidity Range	5% - 95% (Relative, non-condensing) Nominal Temperature 21°C ± 5°C

#### Mechanical Configuration:

Input/Output Ports	10-32 Threaded (Other sizes, consult factory)
Dimensions	L: 2.0" W: 1.5" H: 1.85"
Weight	5.4 oz

#### Construction (wetted materials):

Manifold	Nickel Plated Aluminum, Brass 360
O-Rings	Fluorocarbon (Viton®), others at additional cost
Flow Sensor	Ceramic Flow Tube (non-out gassing), Silicon, Silicon Nitrite, Gold, Aluminum Oxide Epoxy Sealant, Fluorocarbon (Viton®), Polythermide (100+ sccm MFC only)